

CAMERA CABLE NOTE:

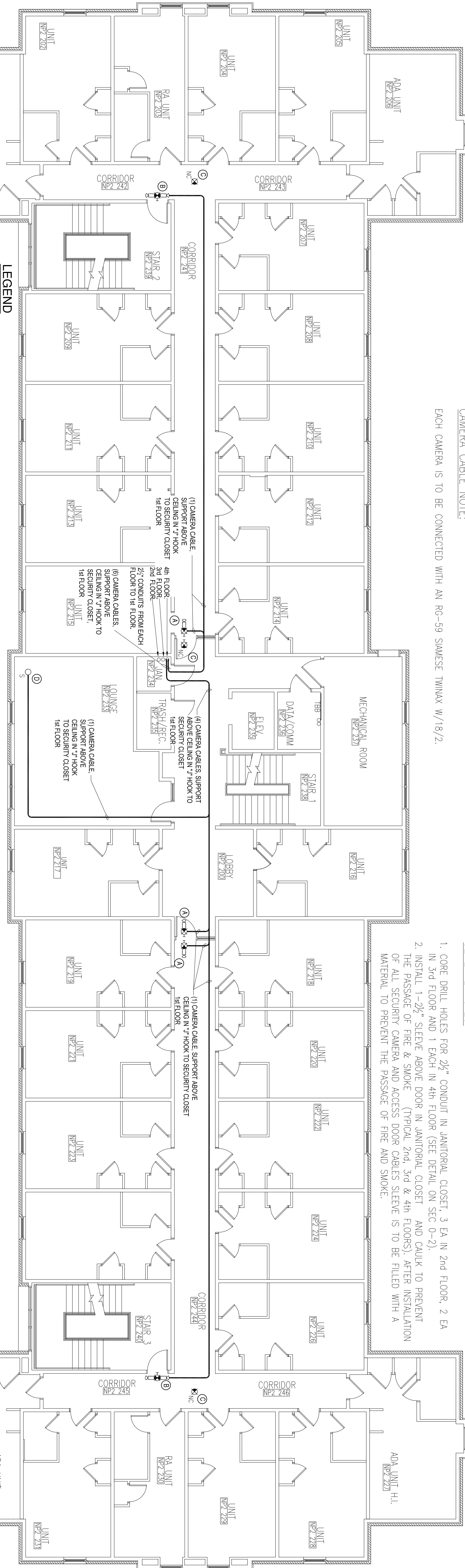
EACH CAMERA IS TO BE CONNECTED WITH AN RG-59 SAMSUNG TWINAX W/18/2.

GENERAL NOTES:

1. CORE DRILL HOLES FOR 2½" CONDUIT IN JANITORIAL CLOSET, 3 EA IN 2nd FLOOR, 2 EA IN 3rd FLOOR AND 1 EACH IN 4th FLOOR (SEE DETAIL ON SEC 0-2).
2. INSTALL 1-2½" SLEEVE ABOVE DOOR IN JANITORIAL CLOSET AND CAULK TO PREVENT THE PASSAGE OF FIRE & SMOKE (TYPICAL 2nd, 3rd & 4th FLOORS). AFTER INSTALLATION OF ALL SECURITY CAMERA AND ACCESS DOOR CABLES SLEEVE IS TO BE FILLED WITH A MATERIAL TO PREVENT THE PASSAGE OF FIRE AND SMOKE.

NP2 & NP4 2ND, 3RD, 4TH FLOOR CAMERA LOCATION & CABLE LAYOUT

SCALE: ¾" = 1'-0"



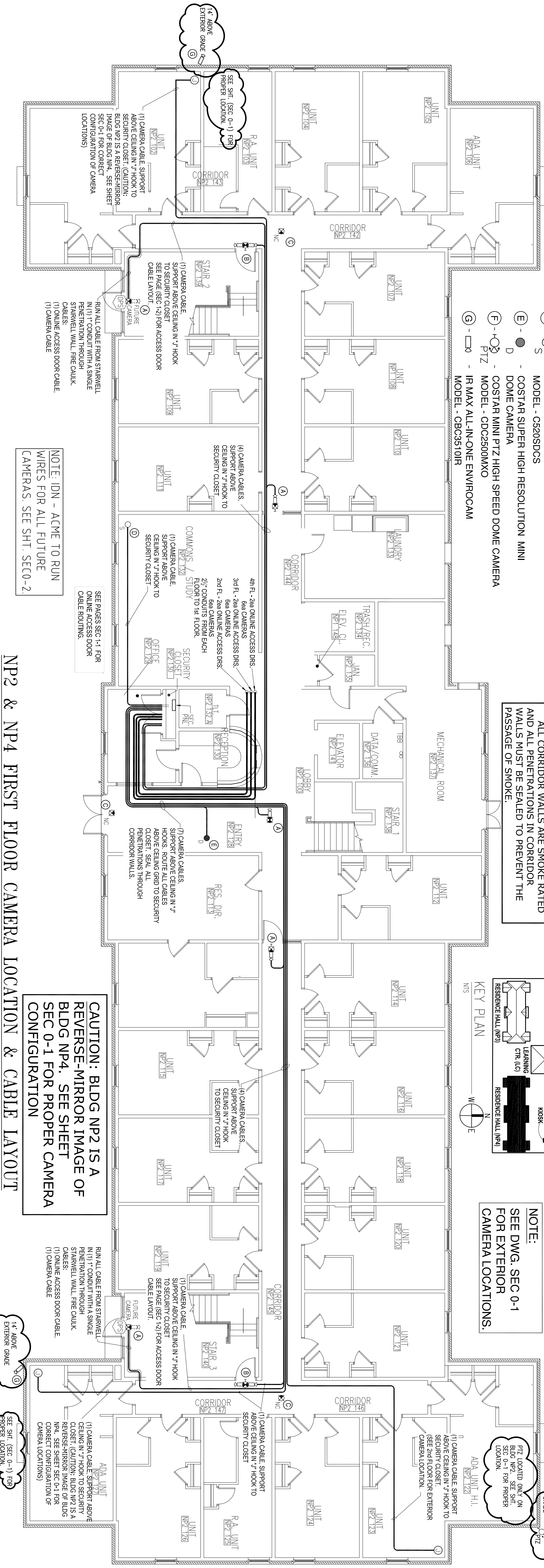
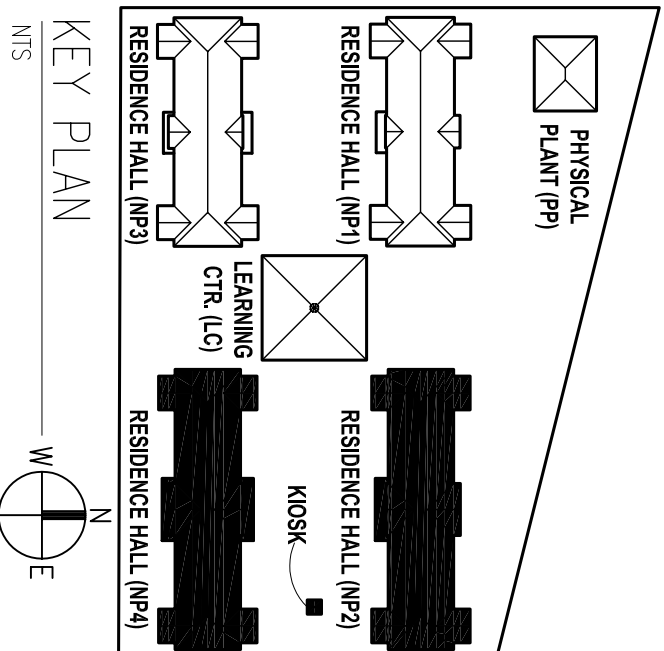
LEGEND

- (A) - WEDEX EXT SIGN W/COVERT CAMERAS
MODEL - WDE-600C (SINGLE)
- (B) - WEDEX EXT SIGN W/COVERT CAMERAS
MODEL - WDE-600C (DOUBLE)
- (C) - E-COULIGHT LED EXT SIGN/W/BATTERY BACKUP
SINGLE/DOUBLE FACE MODEL E-XP2RBW WITHOUT CAMERA
- (D) - ARM ELECTRONICS SMOKE DETECTOR CAMERA
MODEL - CS20SDCS
- (E) - COSTAR SUPER HIGH RESOLUTION MINI DOME CAMERA
- (F) - COSTAR MINI PTZ HIGH SPEED DOME CAMERA
MODEL - CDC2500MXO
- (G) - IR MAX ALL-IN-ONE ENVIROCAM
MODEL - CBC3510IR

NOTE:
ALL PENETRATIONS OF FIRE PARTITIONS SHALL BE FIRE CAULKED. (PENETRATIONS THROUGH RATED CONSTRUCTION SHALL BE SEALED WITH A MATERIAL CAPABLE OF HOT GASES WHEN TESTED IN ACCORDANCE WITH ASTM-E814.)
ALL CORRIDOR WALLS ARE SMOKE RATED AND ALL PENETRATIONS IN CORRIDOR WALLS MUST BE SEALED TO PREVENT THE PASSAGE OF SMOKE.

NOTE:
SEE DWG. SEC 0-2 FOR CAMERA DETAILS.

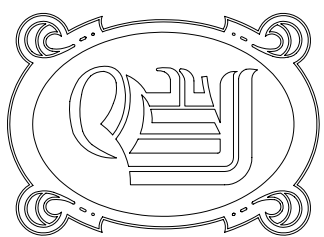
NOTE:
SEE DWG. SEC 0-1 FOR EXTERIOR CAMERA LOCATIONS.



CAUTION: BLDG NP2 IS A REVERSE-MIRROR IMAGE OF BLDG NP4. SEE SHEET SEC 0-1 FOR PROPER CAMERA CONFIGURATION

NP2 & NP4 FIRST FLOOR CAMERA LOCATION & CABLE LAYOUT

SCALE: ¾" = 1'-0"



DAMON
ENGINEERING, INC.

EMMETT
DAMON

ARCHITECT
ROBERT
WILTSE

1095 FLORIDA AVENUE
SLIDELL, LA. 70458
985-649-5832

WEBSITE:
WWW.DAMONENGINEERING.COM

EMAIL:
DAMMONEN@BELLSOUTH.NET

ARCHITECTURE
ENGINEERING
STUDIES
PLANNING
INVESTIGATION
EXPERT WITNESS

CENTURY PARK
UNIVERSITY OF
SOUTHERN
MISSISSIPPI

IDN-ACME INC.
1504 JUSTIN RD.
METairie, LA 70001

NP2 & NP4
CAMERA LOCATION
& CABLE LAYOUT

REV: #1 10/30/09
SCALE: AS NOTED
JOB#: 2028
DATE: 6-29-2009
SHEET: 8

SEC 2-2

OF: 8